



## CORPORATE brochure

experts in  
**CONCRETE**  
STRUCTURES

*Bridge over Homem's River - Portugal*

# about us

*VILAPLANO*, the right choice for partnership in all kind of construction projects. Expert in the reinforced concrete area, with a know-how gained in 30 years of experience since its foundation in the most complex projects either indoors or abroad.

Today *VILAPLANO* is present in international markets such as Algeria, France, Belgium, Brazil, Panama and Costa Rica and has already worked in several other projects in countries like Spain, Angola, Cape Verde, Saudi Arabia, Libya and Togo. Owner of a human capital of over 400 skilled and highly trained employees in the design and implementation of formwork and industrialization and application of reinforcements, *VILAPLANO* offers a comprehensive service for the implementation of concrete structures. Our company also has the ability to operate under the regime of maintenance contracts (*Facility Services*), providing skilled manpower with proven experience for the Construction and Industry areas.

Driven by its own growth and the constant search for answers to the demands of its customers, *VILAPLANO* currently provides a General response for the execution of Building Construction projects, independently and/or grouped with its partners.



*Corgo's Viaduct, Transmontana Highway | Portugal*



our challenge:  
**be better doing more**

## vision

*Be Better Doing More* and *Boundless Commitment* are our Company's slogans and the base of our action.

## mission

Achieving our vision daily is the challenge of being better people and better professionals, what will certainly guarantee our success and organization.

The mission also means doing more which leads to the growing of our business to reach more and better opportunities and challenge of accomplishing our knowledge and the pledge for innovation and constantly reinvent ourselves.

## values

*Dynamism* – Our attitude is the daily decision making by all our employees in order to achieve improvement. We are aware that passivity doesn't add any value or success. Therefore, dynamism is our goal as well as improvement, capacity of response and innovation.

*Compromise* – It is the focus of our priorities, correspond to the expectations of our customers whenever we are chosen directly or indirectly.

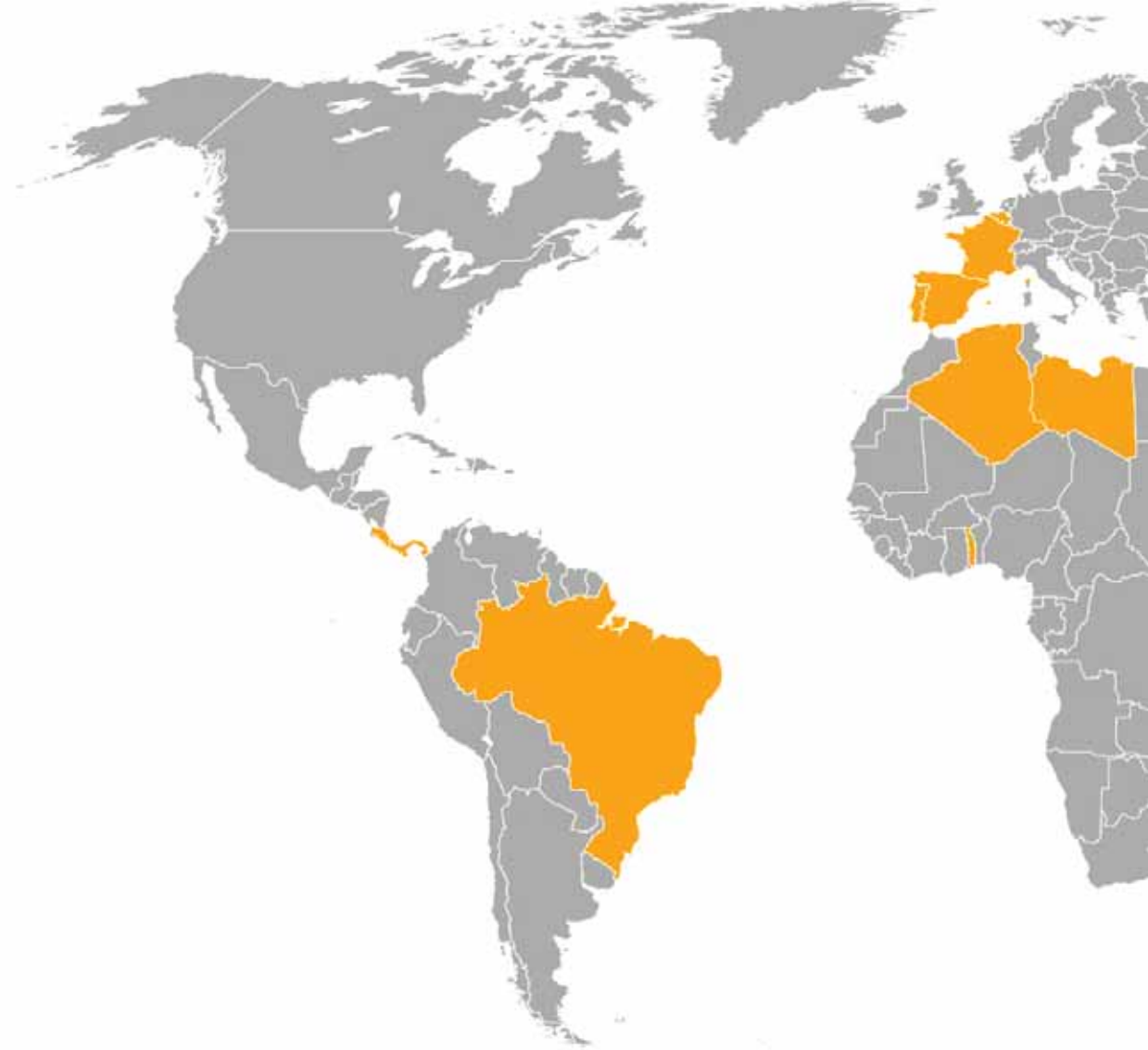
*Dynamism & Compromise* – From our point of view, the fusion of these values is connected to other important ones as well: quality, professionalism, integrity, competence, accuracy, sustainability, innovation, entrepreneurship, solidarity and responsibility. They are essential to a company's commitment with a better world. They are the support and guarantee of our credibility and the loyalty of our clients. In short, they are the basis of our success.

## services

- **FORMWORKS**
- **STEEL REINFORCEMENTS**
- **CONCRETE POURING**
- **FALSEWORKS / SCAFFOLDINGS**
- **PREFABRICATED ELEMENTS**
- **CAR FEED / ADVANCE CARS**
- **AUTO-SHORING / BEAM LAUNCHING**
- **PRESTRESSED STEEL**
- **BRIDGE CABLES**
- **MASONRY**
- **SKILLED MANPOWER SUPPLY**

## types of projects

- **BUILDINGS**  
(RESIDENTIAL | COMMERCIAL | PUBLIC)
- **CIVIL ENGINEERING**  
(ROADS | BRIDGES | VIADUCTS | TUNNELS)
- **INDUSTRIAL & WATERWORKS**  
(DAMS | ROTARY VALVES | PLANTS | FACTORIES)
- **MARITIME WORKS**  
(PORTS | BRACES | DOCKS)



## GLOBAL PRESENCE

Portugal | Spain | France | Belgium |



# VILAPLANO'S ACTIVITY INDICATORS

## • recent **turnover**



## • number of **in-house employees**



Algeria | Saudi Arabia | Panama | Brazil | Costa Rica | Togo | Libya

# PANAMA CANAL

2012 - in execution

CONSTRUCTION OF THE THIRD SET  
OF LOCKS – ATLANTIC SITE  
COLON, PANAMA

GUPC (Grupos Unidos Por el Canal):  
Sacyr + Impregilo + Jan de Nul + CUSA



CONCRETE: 400.000 m<sup>3</sup>

FORMWORK: 250.000 m<sup>2</sup>

FALSEWORK: 200.000 m<sup>3</sup>







## KING ABDULLAH STADIUM

2012 - 2013

CONSTRUCTION OF KING ABDULLAH  
STADIUM  
JEDDAH, SAUDI ARABIA

BESIX + AL MUHAIDIB (Jv)



STEEL: 5.000 Ton

SUPPLY OF SPECIALIZED MANPOWER  
FOR OTHER WORKS:

- CONCRETE
- FORMWORKS
- FALSEWORKS





## TRANSRHUMEL VIADUCT

2010 - in execution

CONSTRUCTION OF THE  
TRANSRHUMEL VIADUCT  
CONSTANTINE, ALGERIA

ZAGOPE + ANDRADE GUTIERREZ



CONCRETE:	33.000 m <sup>3</sup>
FORMWORK:	41.000 m <sup>2</sup>
STEEL:	8.100 Ton
PRESTRESSED STEEL:	350 Ton
S355 STEEL:	840 Ton
BRIDGE CABLES:	480 Ton
CAR FEED:	18.400 m <sup>2</sup>









## COUNTOURNEMENT DE COUVIN

2011 - 2012

CONSTRUCTION OF THE TUNNEL FOR  
RIVER AND STORMWATER DRAINAGE  
COUVIN, BELGIUM

VALENS (EIFFAGE Group)



CONCRETE: 11.500 m<sup>3</sup>

FORMWORK: 12.500 m<sup>2</sup>

FALSEWORK: 12.000 m<sup>3</sup>







# EDF SACLAY

2013 - 2014

CONSTRUCTION OF EDF'S RESEARCH  
& DEVELOPMENT CENTER  
SACLAY, FRANCE

BESIX + SPIE BATIGNOLLES



CONCRETE: 4.000 m<sup>3</sup>

FORMWORK: 22.000 m<sup>2</sup>

FALSEWORK: 36.000 m<sup>3</sup>

# BLONDEN TUNNEL

2013 - 2014

CONSTRUCTION OF THE BLONDEN  
TUNNEL  
LIÈGE, BELGIUM

GALÈRE + CEI-De Meyer  
(BAM Group)



CONCRETE: 10.000 m<sup>3</sup>  
FORMWORK: 21.000 m<sup>2</sup>  
STEEL: 1.100 Ton







# BRAGA STADIUM

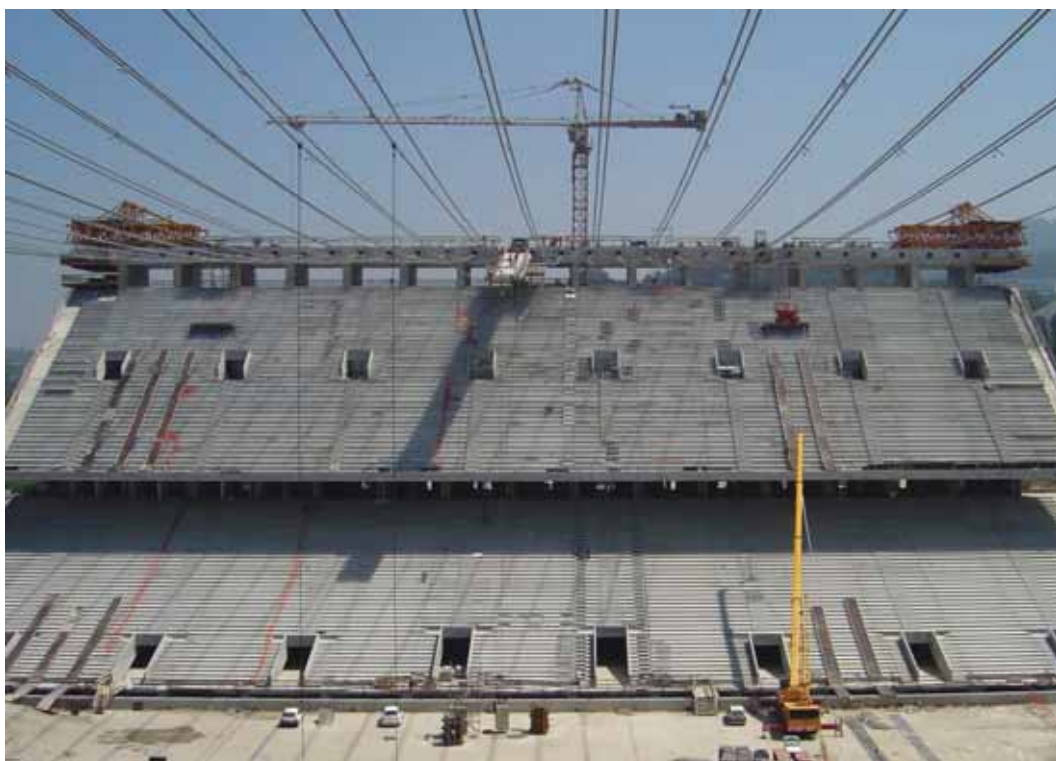
2001 - 2002

CONSTRUCTION OF S.C. BRAGA'S  
STADIUM  
BRAGA, PORTUGAL

SOARES DA COSTA



CONCRETE:	55.000 m <sup>3</sup>
FORMWORK:	260.000 m <sup>2</sup>
STEEL:	8.000 Ton







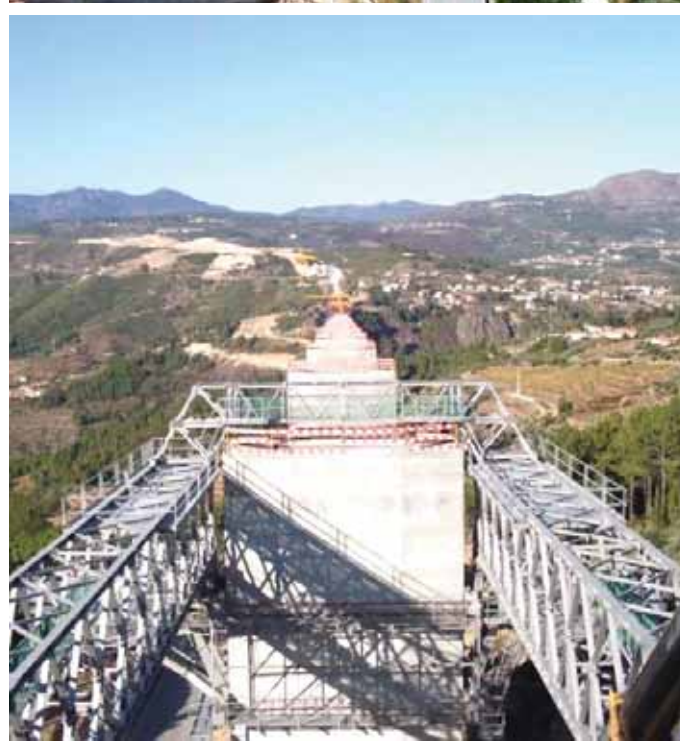
# LACTOGAL FACTORY

2007

CONSTRUCTION OF LACTOGAL'S  
FACTORY  
OLIVEIRA DE AZEMÉIS, PORTUGAL  
MESQUITA + SILVA & BRANDÃO



CONCRETE:	12.000 m <sup>3</sup>
FORMWORK:	36.000 m <sup>2</sup>
STEEL:	2.000 Ton
FALSEWORK:	50.000 m <sup>3</sup>





## TRANSMONTANA HIGHWAY

2011 - 2013

CONSTRUCTION OF THE CORGO'S  
VIADUCT  
VILA REAL, PORTUGAL

CAET XXI:  
FCC Construcciones + RRC + Soares da Costa



CONCRETE:	35.000 m <sup>3</sup>
FORMWORK:	8.000 m <sup>2</sup>
STEEL:	25.000 Ton
BEAM LAUNCHING:	33.000 m <sup>2</sup>
CAR FEED:	23.000 m <sup>2</sup>

# TAMANRASSET HOSPITAL

2010 - 2011

CONSTRUCTION OF THE MILITARY  
HOSPITAL OF TAMANRASSET  
TAMANRASSET, ALGERIA

LENA CONSTRUCTION (ALGERIA)



CONCRETE: 30.000 m<sup>3</sup>

FORMWORK: 120.000 m<sup>2</sup>

STEEL: 4.000 Ton





## Oporto's METRO

2004 - 2007

CONSTRUCTION OF OPORTO'S  
METROPOLITAN  
PORTO, PORTUGAL

SOMAGUE



CONCRETE: 18.000 m<sup>3</sup>

FORMWORK: 10.000 m<sup>2</sup>

STEEL: 5.000 Ton



notes

*Dragão Caixa Pavilion | Portugal*



*Chirec's Hospital | Belgium*



*Oporto's House of Music | Portugal*



*Fatima's Sanctuary | Portugal*



### **BELGIUM office**

Rue de la Corderie, 10  
1300 Wavre  
Belgium

Tel.: +32 496 919 996

### **ALGERIA office**

Lot 20, Chemin Doudou Mokhtar  
Micro Zone d'Activité Immueble  
Dar El Madina - Bloc A - 1er Et.  
Hydra, 16035 - Alger, Algeria

Tel.: +213 (0)23 53 11 05

### **BRAZIL office**

Av. José Neto Paranhos, Qd.39  
Lote 1, Sala 09 - Jundaí  
CEP: 75.110-750 Anapólis-GO  
Brazil

Tel.: +55 62 33 17 73 85

### **PANAMA office**

Calle 50, Edificio Torre Financial  
Center, Piso 35  
Ciudad de Panamá,  
Panamá

Tel.: +507 297 4603

### **headquarters**

Rua Manuel Boaventura, 19  
4740-305 Esposende  
Portugal

Tel.: +351 253 986 097

### **international office**

Urb. Quinta do Almirante  
R. Diogo Cão, 6 – Lj.1  
2660-445 St. Ant. Cavaleiros  
Lisbon, Portugal

Tel.: +351 218 253 356

### **e-contacts**

geral@vilaplano.com  
international@vilaplano.com

[www.vilaplano.com](http://www.vilaplano.com)



[vilaplano.com](http://vilaplano.com)

*sermos melhores* fazendo mais

**be better** doing more

*ser mejor* haciendo más

*être mieux* faisant plus

*zijn beter* doen meer

*besser sein* mehr tun

يكون أفضل، القيام بالمزيد

PORTUGAL

SPAIN

FRANCE

BELGIUM

ALGERIA

SAUDI ARABIA

PANAMA

BRAZIL

COSTA RICA

TOGO

LIBYA

